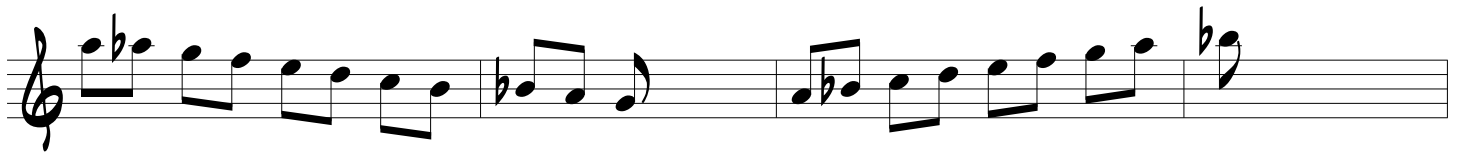
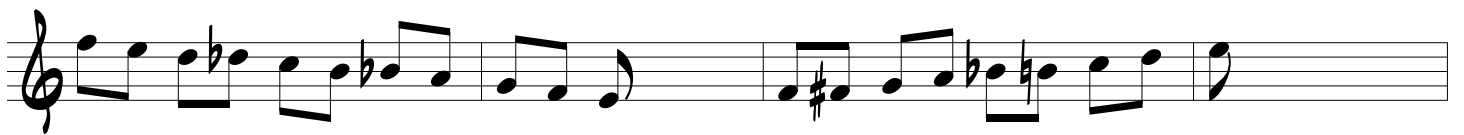
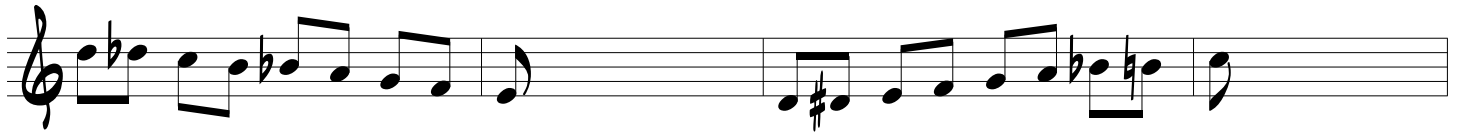


Bop scales over C Δ

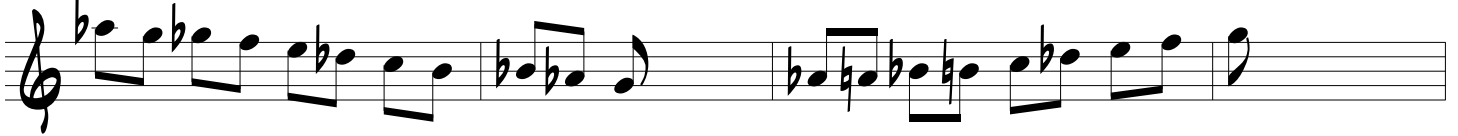
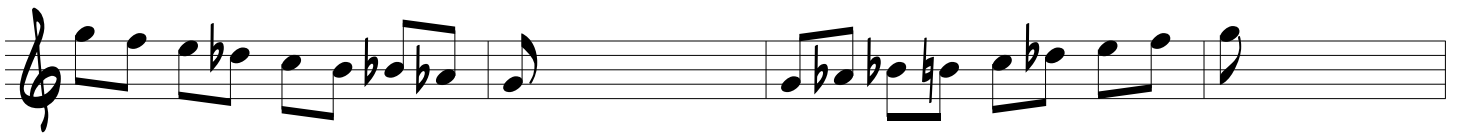
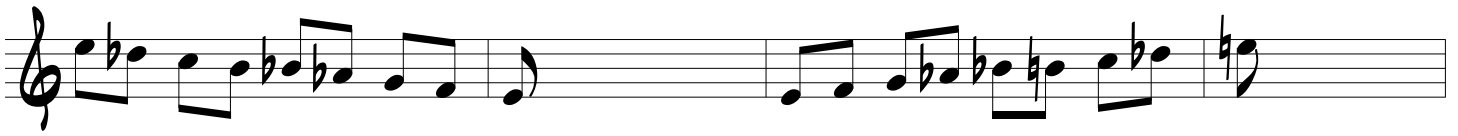
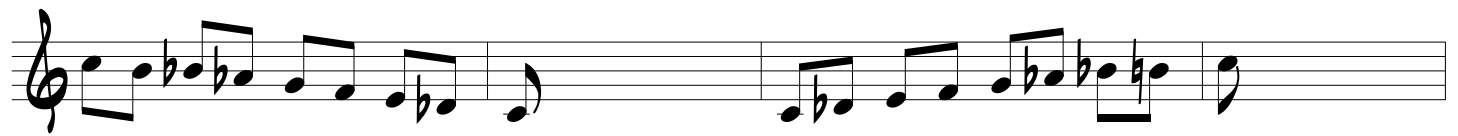
The image displays seven musical staves, each containing a Bop scale over a C major chord (C Δ). The scales are as follows:

- Staff 1: C major scale (C-D-E-F-G-A-B-C).
- Staff 2: C major scale with a flat on the 7th degree (C-D-E-F-G-A \flat -B-C).
- Staff 3: C major scale with a sharp on the 7th degree (C-D-E-F-G-A \sharp -B-C).
- Staff 4: C major scale with flats on the 6th and 7th degrees (C-D-E-F \flat -G \flat -A-B-C).
- Staff 5: C major scale with a sharp on the 6th degree (C-D-E-F \sharp -G-A-B-C).
- Staff 6: C major scale with flats on the 2nd and 3rd degrees (C-D \flat -E \flat -F-G-A-B-C).
- Staff 7: C major scale with flats on the 2nd and 3rd degrees and a sharp on the 6th degree (C-D \flat -E \flat -F-G-A \sharp -B-C).

Bop scales over C7 (and Gm7)



Bop scales over C7b9b13 (and Gm7b5)



Bop scales over CmΔ

